

AVAILABLE



SOUTH HILL, VIRGINIA

Crane Served • 78,151 Square Feet on 30.01 Acres

TOTAL SQ. FT: 78,151 SF

DIMENSIONS:

Mfg. Area: 460' x 150'3" plus support area

Office Area: 103' 7" x 40' 8"

LOT SIZE: 30.01 acres (approximately 45.06 acres of additional land adjacent to the south, east and west boundaries of the site could be made available at additional cost)

PARKING: Gravel parking area which currently accommodates 50 cars

CONDITION: Good

DATE(S) OF CONSTRUCTION:

Original: 1979 (69,151 SF)

Addition: 1994 (9,000 SF)

CONSTRUCTION:

Floors: 6" reinforced concrete floors; 6x6x10/10 wwm

Walls: 26-gauge corrugated pre-engineered metal wall system with 2" vinyl-backed insulation; 8' high interior plywood liner panel

Office exterior features painted brick over insulated block

Columns: 8" circular steel

Ceiling: 1-1/2" exposed vinyl-backed insulation

Roof: 26-gauge corrugated pre-engineered metal panels with 1-1/2" vinyl-backed insulation

OFFICE AREA: 8,422 SF of two story offices and plant support areas divided as follows:

First floor of 4,211 SF consists of canteen area, plant restrooms, two storage rooms and two supervisory offices

Second floor of 4,211 SF is air-conditioned and consists of (6) private offices, reception area, kitchen, conference room and (3) general clerical areas; finish includes dry-wall portions, vinyl tile flooring, recessed fluorescent lighting and acoustical ceiling

CEILING HEIGHTS:

Original: 24' eave height, 29' center height

Addition: 30' eave height, 31'7" center height

COLUMN

SPACING:

25' x 50'

POWER:

Source: Supplied by Dominion Power Company

Primary: 12,470 volts primary distribution line

Transformer: 1,500 KVA pad mounted transformer

Secondary: Square D switchgear, 4,000 amp, 277/480 volt, 3-phase, 4-wire

Distribution: Approximately 200 linear feet of 400 amp, 3-phase, 3-wire, 277/480 volt bus duct

Approximately 700 linear feet of 1,600 amp, 3 phase, 4 wire, 277/480 volt bus duct

Approximately 375 linear feet of 800 amp, 3-phase, 4-wire, 277/480 volt bus duct

HEATING:

(15) suspended "re-VerbarRay" gas-fired infrared space heaters

SPRINKLER:

100% wet with (2) risers (8" and 4") which produce .44/gpm over 3,000 SF at 40.95 psi

WATER:

Supplied by the Town of South Hill
8" main, 2" line

SEWER:

Supplied by the Town of South Hill
8" main, 4" line

GAS:

Supplied by the Amerigas Gas Company; 6" high pressure main at 60 PSI; 1-1/2" and 2" lines to building, distributed by 1" line throughout manufacturing area for process use

COMPRESSED AIR: 50 H.P. Quincy air compressor with Arrow air dryer; airlines are distributed throughout the plant

LIGHTING: 400 watt mercury vapor fixtures

VENTILATION: Center ridge vents toward south portion of the plant; (6) wall mounted louvered centrifugal exhaust fans



TRUCK LOADING:

North Wall:

(1) 14' x 16' manual overhead drive-in door

East Wall:

(5) 8' x 10' manual overhead truck high loading doors with bumper pads, dock seals, trailer locks and manual load levelers

(1) 12' x 16' manual rollup truck high loading door; cutout in place to add load leveler

West Wall:

(1) 14' x 16' electric overhead drive-in door

(1) 14' x 16' electric overhead drive-in door

South Wall:

(3) 16' x 20' electric overhead drive-in doors

(1) 16' x 14' electric overhead drive-in door

CRANES:

(4) Wright 5-ton overhead bridge cranes; 15' clearance under hook in outside bays; and 18'6" clearance under hook in center bay; 400' travel and a 46' span

ZONING:

M-2 manufacturing

TAXES:

2008 - \$7,842.78

POSSESSION:

Immediately

PLANS:

Available upon request

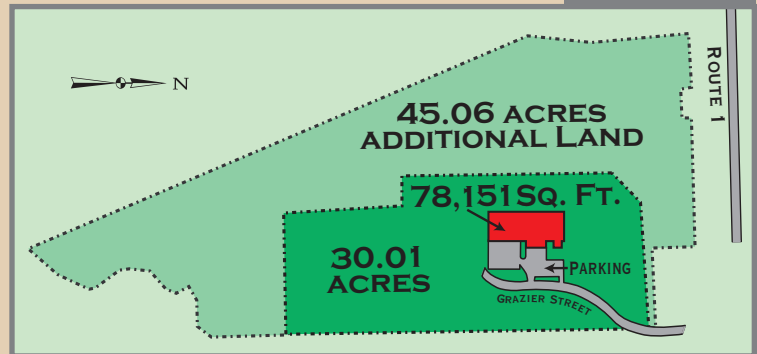
LAST USE:

Modular homes

MISC:

- Limited access security fencing along the north and west boundaries of the property
- Public address system
- Exterior security lighting

PLOT PLAN



AREA MAP



HART CORPORATION

INTERNATIONAL INDUSTRIAL REAL ESTATE

CORPORATE HEADQUARTERS
900 Jaymor Road
Southampton, PA 18966-3820
Telephone (215) 322-5100
FAX (215) 322-5840/41

CAROLINAS/VIRGINIA REGION
7422 Carmel Executive Park, Suite 216
Charlotte, NC 28226-8286
Telephone (704) 541-1393
FAX (704) 541-6151

Web Site - <http://www.hartcorp.com>

E-Mail - hart@hartcorp.com

REGIONAL OFFICES

ATLANTA ■ CHARLOTTE ■ DALLAS ■ HARTFORD ■ KANSAS CITY ■ PHILADELPHIA



All information furnished regarding property for sale, rental, or financing is from sources deemed reliable, but no warranty or representation is made as to the accuracy thereof and same is submitted subject to errors, omissions, change of price, rental or other conditions, prior sale, lease or financing or withdrawal without notice. No liability of any kind is to be imposed on the broker herein.